

## Technical Information

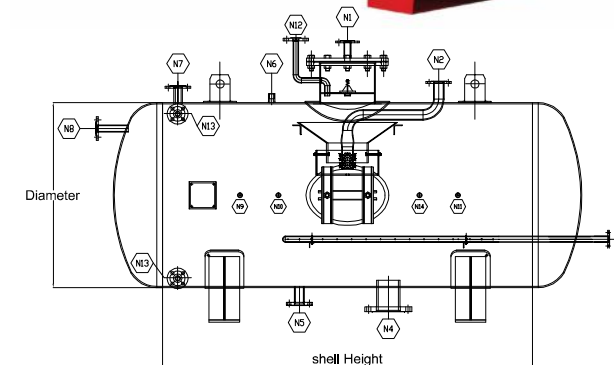
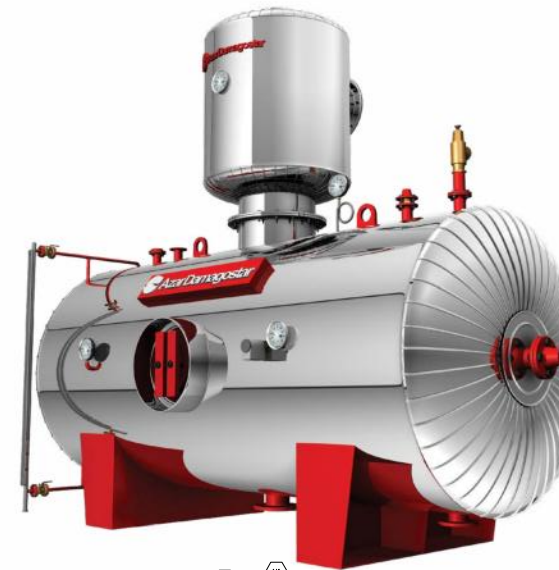
Deaerator Spray-Type (DS-ADS)							
Model	Capacity	Water Capacity	Dimension		Valves		
	m <sup>3</sup>	Lit	Length	Diameter	Steam Inlet	Water Outlet	Over Flow
D.ADS.500	0.5	260	600	660	1"	1"	1"
D.ADS.1000	1	430	1100	660	1"	1"	1"
D.ADS.1500	1.5	570	1500	660	2"	1 1/2"	1 1/4"
D.ADS.2000	2	770	1150	850	2"	1 1/2"	1 1/4"
D.ADS.2500	2.5	970	1500	850	2"	1 1/2"	1 1/4"
D.ADS.3000	3	1100	1500	900	2"	1 1/2"	1 1/4"
D.ADS.4000	4	1360	1500	1000	2"	1 1/2"	1 1/4"
D.ADS.5000	5	1675	1500	1100	3"	2"	1 1/2"
D.ADS.8000	8	2750	1500	1400	3"	2"	1 1/2"
D.ADS.10000	10	3380	1900	1400	3"	2"	1 1/2"
D.ADS.15000	15	5070	3000	1400	3"	2"	1 1/2"
D.ADS.20000	20	6800	2500	1750	3"	4"	1 1/2"
D.ADS.25000	25	9500	3000	1900	4"	3"	2"
D.ADS.35000	35	12400	3000	2200	4"	3"	2"
D.ADS.45000	45	15000	3700	2200	4"	3"	2"

Deaerator Tray-Type (DT-ADS)									
Model	Capacity	Water Capacity	Dimension		Dome		Valves		
	m <sup>3</sup>	Lit	Length	Diameter	D (Inch)	H (mm)	Steam Inlet	Water Outlet	Over Flow
D.ADS.500	0.5	260	600	660	...	...	1"	1"	1"
D.ADS.1000	1	430	1100	660	10"	500	1"	1"	1"
D.ADS.1500	1.5	570	1500	660	12"	500	2"	1 1/2"	1 1/4"
D.ADS.2000	2	770	1150	850	12"	500	2"	1 1/2"	1 1/4"
D.ADS.2500	2.5	970	1500	850	14"	600	2"	1 1/2"	1 1/4"
D.ADS.3000	3	1100	1500	900	14"	600	2"	1 1/2"	1 1/4"
D.ADS.4000	4	1360	1500	1000	14"	600	2"	1 1/2"	1 1/4"
D.ADS.5000	5	1675	1500	1100	14"	600	3"	2"	1 1/2"
D.ADS.8000	8	2750	1500	1400	16"	700	3"	2"	1 1/2"
D.ADS.10000	10	3380	1900	1400	16"	700	3"	2"	1 1/2"
D.ADS.15000	15	5070	3000	1400	16"	700	3"	2"	1 1/2"
D.ADS.20000	20	6800	2500	1750	18"	900	3"	4"	1 1/2"
D.ADS.25000	25	9500	3000	1900	18"	900	4"	3"	2"
D.ADS.35000	35	12400	3000	2200	20"	1000	4"	3"	2"
D.ADS.45000	45	15000	3700	2200	24"	1200	4"	3"	2"

## Deaerator

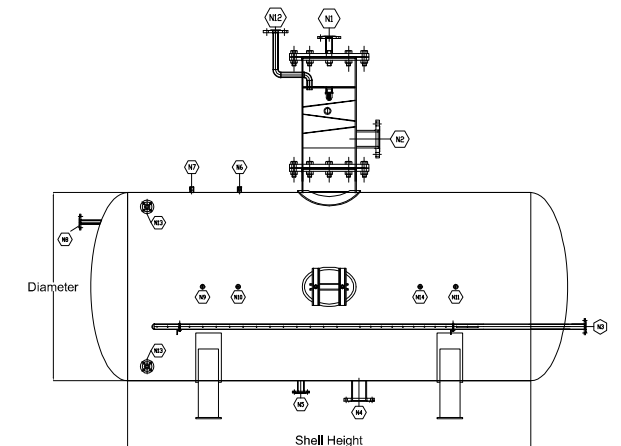
D.ADS

دی اریتور



DS- deaerator spray type

Part No.	Qty.	SERVICE
N1	1	Water inlet
N2	1	STEAM INLET
N3	1	WARM UP STEAM
N4	1	PUMP SUCTION
N5	1	DRAIN
N6	1	Chemical Injection
N7	1	VACUUM BREAKER
N8	1	OVER FLOW TRAP
N9	1	MANOMETER
N10	1	THERMOSTAT
N11	1	THERMOMETER
N12	1	VENT
N13	2	SIGHT GLASS
N14	1	SAMPLING VALVE



DT- deaerator tray type

## مشخصات فنی

- Designed according to Standard ASMA-SECTION=VI
- Capacity: 500-45000 Litrs
- High efficiency, High quality
- Three stages of aerosolization with aerosol turret
- Using alloy 17Mn4 steel sheets
- Stainless steel covering
- Approval drawing certificate and quality control inspection plates
- Extra passes tube
- Inspection of all stages of production by quality control unit

- طراحی شده طبق استاندارد ASME.SEC VIII. Div1.
- ظرفیت ۵۰۰ تا ۴۵۰۰۰ لیتر
- راندمان بالا ، کیفیت بالا ، زیبایی در طراحی
- دارای سه مرحله هوا زدایی در مدلهای دارای برجک هوازدا
- ساخت با استفاده از ورق های 17Mn4
- کاورکشی با استفاده از ورق های استنلس استیل
- دارای گواهینامه تایید نقشه و پلاک بازرسی کنترل کیفیت
- دارای لوله های اضافی عبور
- بازرسی تمام مراحل ساخت توسط واحد کنترل کیفیت